



The Play Inspection Co.

Cadenza



PercussionPlay[®]

Outdoor Musical Instruments

Staple Ash Ln, Froxfield,
Petersfield GU32 1DJ



The Play Inspection Company Ltd, Unit 5 Glenmore Business Park, Blackhill Road, Holton Heath, Poole, Dorset, BH16 6NL

t: 01202 590675

e: info@playinspections.co.uk

w: www.playinspections.co.uk



**The Play
Inspection Co.**

Cadenza

Assessment Date: 24th September 2021
Assessor: Keith Dalton
Manufacturer: Percussion Play Ltd
Risk Assessment: Very Low Risk

Activity:

Use of musical playground equipment item

Number of Persons at Risk:

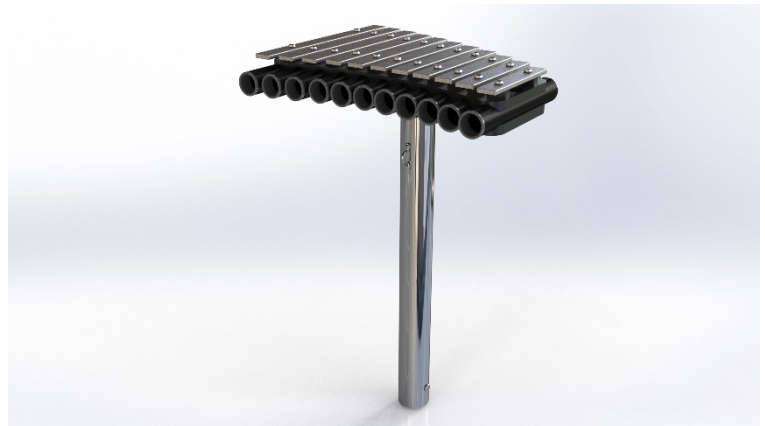
Users, plus spectators

Hazards Involved with the Activity:

- Collision

Safety Measures/Controls:

- The design of this musical item falls outside the scope of EN 1176; it is not intended to be used as play equipment. We have however, used our knowledge of EN 1176 in formulating this assessment and consider it to be safe when used as intended.
- There are no falling height requirements for this type of equipment.
- The challenge (risk) associated with the use of the equipment is clearly foreseeable by the users.
- Age range: the intended age range for this item of equipment is for children of 3 years of age and above.
- All items should be placed outside any free or falling space of playground items in the area; a circulation area of 1.50 metres should be allowed around the footprint of each item to allow free movement for spectators around the item without moving into the space required for the safe use of the equipment.
- Correct siting of the equipment item within the playground environment to ensure free passage of playground users around the area.
- Detailed inspection and maintenance procedures to be provided for the equipment providing guidance on allowable tolerances during normal operation.



Risks remaining after the application of control measures:

Collision

With all control measures applied there will still be a risk remaining of users colliding with the equipment or with other users. It is considered that this remaining risk is of no significance, or any different from similar equipment item that incorporates this type of movement.

Given the provision of the safety measures detailed the remaining risk is considered to be 1 x 2 VERY LOW RISK

Additional Controls Required: None

Risk Rating:

Likelihood		Severity	
1	Very Unlikely	1	Minor abrasion, light bruising
2	Not Very Likely	2	Small cuts, light sprains, more severe abrasion
3	Will happen at some time	3	Deep cuts, severe sprains etc. requiring medical intervention
4	Likely to happen	4	Injury requiring medical intervention and hospitalisation
5	Almost Certain to Happen	5	Permanent disability/death

Risk Score	Description	Action Required
1 - 5	Very Low Risk	Maintain control measures
6 - 10	Low Risk	Review control measures
11 - 15	Moderate Risk	Improve control measures
16 - 20	High Risk	Prevent access to item
21 - 25	Very High Risk	Remove from site

To establish the risk score multiply Likelihood by Severity

Controls Adequate:

Signed:

Keith Dalton



Date: 24th September 2021

The Play Inspection Company Ltd

Assessment Review Date: 24th September 2022

