



# The Play Inspection Co.

## Babel Drum Small



Staple Ash Ln, Froxfield,  
Petersfield GU32 1DJ



CERTIFIED MEMBER

The Play Inspection Company Ltd, Unit 5 Glenmore Business Park, Blackhill Road, Holton Heath, Poole, Dorset, BH16 6NL

t: 01202 590675

e: [info@playinspections.co.uk](mailto:info@playinspections.co.uk)

w: [www.playinspections.co.uk](http://www.playinspections.co.uk)



**The Play  
Inspection Co.**

## Babel Drum Small

Assessment Date: 10th February 2023  
Assessor: Keith Dalton  
Manufacturer: Percussion Play Ltd  
Risk Assessment: Very Low Risk

**Activity:**

Use of musical playground equipment item

**Number of Persons at Risk:**

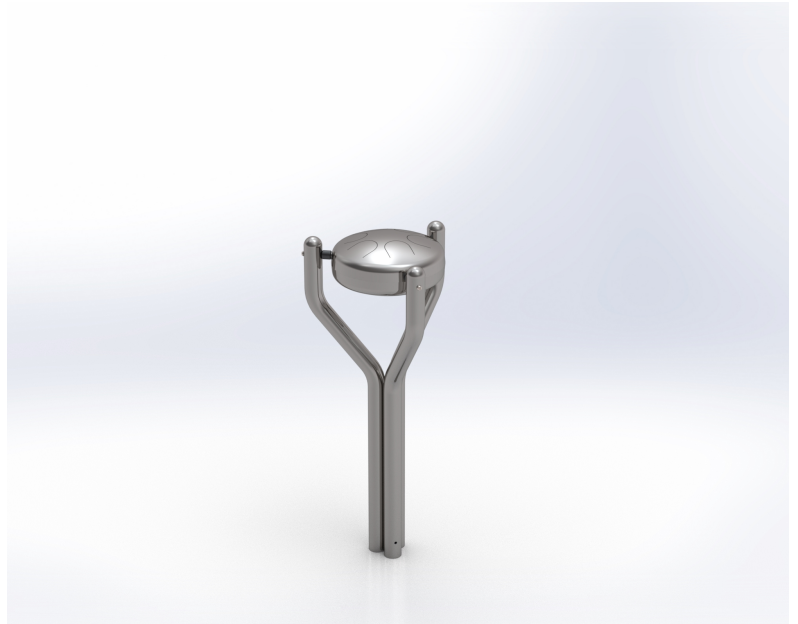
Users, plus spectators

**Hazards Involved with the Activity:**

- Collision

**Safety Measures/Controls:**

- The design of this musical item falls outside the scope of EN 1176; it is not intended to be used as play equipment. We have however, used our knowledge of EN 1176 in formulating this assessment and consider it to be safe when used as intended.
- There are no falling height requirements for this type of equipment.
- The challenge (risk) associated with the use of the equipment is clearly foreseeable by the users.
- Age range: the intended age range for this item of equipment is for children of 3 years of age and above.
- All items should be placed outside any free or falling space of playground items in the area; a circulation area of 1.50 metres should be allowed around the footprint of each item to allow free movement for spectators around the item without moving into the space required for the safe use of the equipment.
- Correct siting of the equipment item within the environment to ensure free passage of users around the area.
- Detailed inspection and maintenance procedures to be provided for the equipment providing guidance on allowable tolerances during normal operation.



**Risks remaining after the application of control measures:**

**Collision**

With all control measures applied there will still be a risk remaining of users colliding with the equipment or with other users. It is considered that this remaining risk is of no significance, or any different from similar equipment item that incorporates this type of movement.

Given the provision of the safety measures detailed the remaining risk is considered to be 1 x 2 VERY LOW RISK

**Additional Controls Required:**           None

**Risk Rating:**

Likelihood		Severity	
1	Very Unlikely	1	Minor abrasion, light bruising
2	Not Very Likely	2	Small cuts, light sprains, more severe abrasion
3	Will happen at some time	3	Deep cuts, severe sprains etc. requiring medical intervention
4	Likely to happen	4	Injury requiring medical intervention and hospitalisation
5	Almost Certain to Happen	5	Permanent disability/death

Risk Score	Description	Action Required
1 - 5	Very Low Risk	Maintain control measures
6 - 10	Low Risk	Review control measures
11 - 15	Moderate Risk	Improve control measures
16 - 20	High Risk	Prevent access to item
21 - 25	Very High Risk	Remove from site

To establish the risk score multiply Likelihood by Severity

**Controls Adequate:**

Signed:



Date: 10th February 2023  
The Play Inspection Company Ltd

Assessment Review Date: 10th February 2024





